

CEL-FI. GO RED

FirstNet

Smart Signal Booster®

CEL-FI.
by NEXTIVITY



Performance
Leadership



Ease of
Install



Leaders
in Value



Fast
Set Up



Carrier Grade
Approved



FIRSTNET.
Built with AT&T

Indoor/Outdoor Smart Signal Booster for FirstNet Public Safety Network

Designed to solve cellular coverage issues for emergency communications, the Cel-Fi GO RED Smart Signal Booster keeps police, fire, military, medical, and news personnel connected through priority FirstNet and AT&T cellular coverage. As the most powerful carrier-grade solution available, GO RED offers up to 100 dB gain with class-leading voice and data wireless performance. GO RED is also unconditionally network safe, does not interfere with other wireless signals, and is NEMA 4 rated for indoor and outdoor use. When communication is critical, GO RED delivers the cellular coverage emergency workers can count on.

Industry-Leading Signal Gain

By leveraging Nextivity's award-winning IntelliBoost® chipset, GO RED is engineered to deliver unmatched cellular performance and signal gain up to 100 dB.

Indoor/Outdoor NEMA 4 Rating

Cel-Fi GO RED is built to offer reliable cellular connectivity for indoor and outdoor environments. With its NEMA 4 Rating, the system can withstand harsh weather conditions that include water, dust, and dirt.

Safer Buildings Coalition

Cel-Fi is a member of the Safer Buildings Coalition, which is an independent organization that's focused on advancing policies, ideas, and technologies that ensure effective in-building communications capabilities for public safety personnel and the people they serve.



Model #	Bands
G32-12/14X	12, 14
G32-3/20X	3, 20



FirstNet:

Boost FirstNet Band 14 and AT&T Band 12



Maximum Gain:

Industry-Leading Signal Gain up to 100 dB for Voice and Data



Best Performance: Smart Signal Booster with IntelliBoost® Chipset Smart Technology



Cellular Coverage:

Up to 15,000 ft² (1,500 m²) per system



Ease of Setup: 6 Steps for Installers and Maximized by AntennaBoost™



Cel-Fi WAVE:

Set Up and Change Modes



Network Safe:

Carrier Approved with No Noise Guarantee



Weather Resistant:

Indoor/Outdoor NEMA 4 Rated

The FirstNet Network

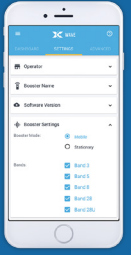
Improved Emergency Communications

Created to help safety organizations and first responders better protect their communities, FirstNet is a nationwide, high-speed wireless broadband network that delivers dedicated cellular bands for public safety communication devices.

Flexibility at Your Fingertips

Antenna Positioning

To optimize your antenna using real-time data and achieve best possible performance, Nextivity's proprietary 8-position dial base in WAVE's Antenna Position Test allows you to compare signal strength when rotating the antenna in 45-degree increments.



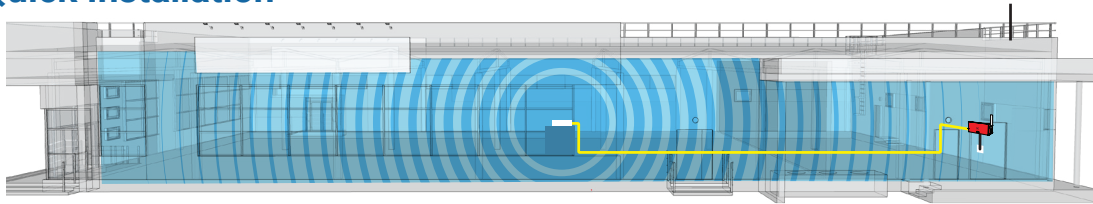
Pair Cel-Fi GO RED with Cel-Fi Antennas to Create the Ideal Solution that Optimizes Performance and Streamlines Installation

Cel-Fi GO RED bundles are perfect for:

- Fire and Police Stations
- Hospitals
- Military Bases and Airports
- Government Buildings
- News Organizations
- Apartment Complexes
- Corporate and Commercial Businesses
- Remote and Rural Locations

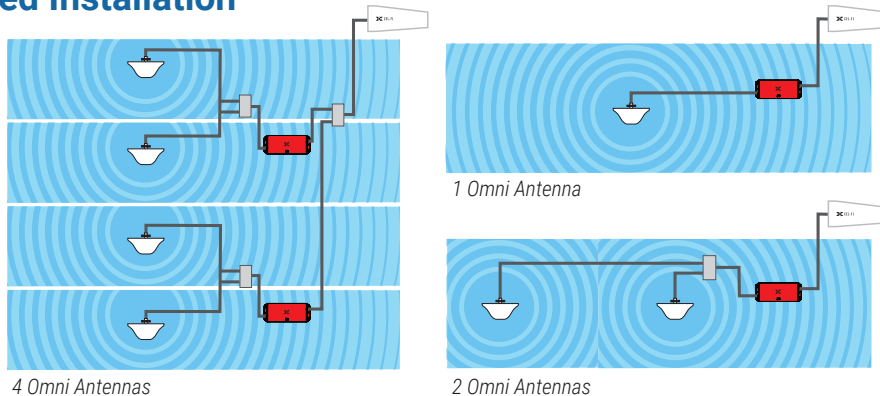
Combined with either Cel-Fi Omni Dome Antenna(s) for ceiling mounting or Cel-Fi Wideband Panel Antenna(s) for wall mounting, the Cel-Fi GO RED and Cel-Fi Wideband Directional Antenna is the perfect in-building, remote, and IoT solution. Additional server antennas are available for venues with more floors or dense interior walls. For areas that suffer from extremely poor outdoor signal, the high gain LPDA-R Antenna is available.

Quick Installation



Coverage Diagram

Advanced Installation



Optional Antennas for Advanced Installations



Cel-Fi Wideband Panel Antenna

A52-V32-100



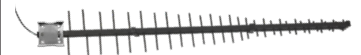
Cel-Fi Wideband Directional Antenna

A32-V32-100



Cel-Fi Indoor Omni Antenna

A11-V43-100



Cel-Fi LPDA-R Antenna

A62-V44-200

6-STEP SET UP

- | | | | | | |
|--|---|---------------------------------------|--|--|---|
| Step 1:
Install Server Antennas with Cable | Step 2:
Install Donor Antennas with Cable | Step 3:
Mount Cel-Fi GO RED | Step 4:
Connect Donor & Server Antennas with Splitter to the Cel-Fi GO RED | Step 5:
Connect the AC or CLA Power Source | Step 6:
Activate & Optimize Set Up with Cel-Fi WAVE |
|--|---|---------------------------------------|--|--|---|



brief_go-red_22-0607



Nextivity Inc.
16550 West Bernardo Drive, Bldg. 5, Suite 550, San Diego, CA 92127
www.cel-fi.com

[Learn More](#)

